

FITTINGS

MW0022-450B

Waste Bin



B

Fittings

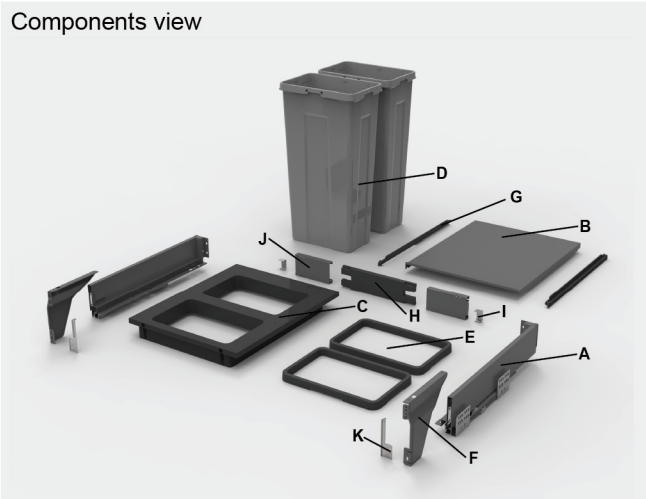


Product attribute introduction

- Size - W(414/418) * D506 * H550mm
- Bin Configuration - 21L x 2L
- Total Capacity - 42L
- Colors - Silver Grey
- Tested to 80,000 cycles
- 40kg loading capacity
- Comes with an internal fixed metal lid that can be used as a shelf
- Top-mount installation for greater stability
- Over-travel slides allow for easier removal of bins
- Soft close full extension runners ensure quiet, smooth drawer operation

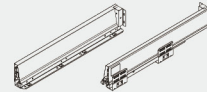
Product Information

Components view



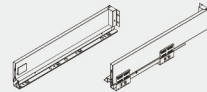
A: SB1801-A01-500

Drawer slide L/R
Material - cold-rolled steel
Loading capacity: 40kg



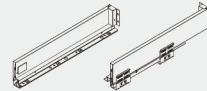
A: SB1900-A01-500

Drawer slide L/R
Material - cold-rolled steel
Loading capacity: 40kg



A: SB1900S-A01-500

Drawer slide L/R
Material - cold-rolled steel
Loading capacity: 40kg



A: S12201 (*4)

16 board cabinet kit
Material - Plastic
Colors - Black



F: S22201

Side wall bracket L/R
Material - cold-rolled steel
Color - Match for set color



G: S12204 (*2)

Lid bracket
Material - Plastic



H: S12205

Back panel connector
Material - Plastic



I: S22204 (*2)

Positioning bracket card
Material - Iron



J: S22205 (*2)

Iron back panel
Material - SECC



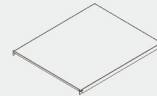
K: S22206

Bucket rack fixing components
Material - SECC



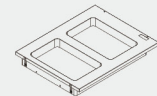
B: S22202

lid
Material - cold-rolled steel
Color - Match for set color



C: S12202

Bucket rack
Material - Plastic
Colors - Black
Size - 400*500mm



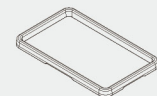
D: S12206 (*2)

Waste bin
Material - Plastic
Colors - Silver Grey
Size - 295*185*550mm



E: S12207 (*2)

Bucket clamp
Material - Plastic
Colors - Black
Size - 295*185mm



MW0022-600B

Waste Bin

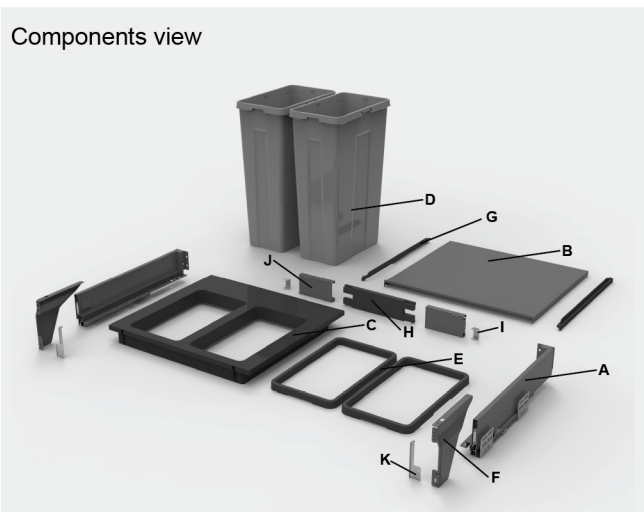


Product attribute introduction

- Size - W(564/568) * D506 * H550mm
- Bin Configuration - 31L x 2L
- Total Capacity - 62L
- Colors - Silver Grey
- Tested to 80,000 cycles
- 40kg loading capacity
- Comes with an internal fixed metal lid that can be used as a shelf
- Top-mount installation for greater stability
- Over-travel slides allow for easier removal of bins
- Soft close full extension runners ensure quiet, smooth drawer operation

Product Information

Components view



F: S22201

Side wall bracket L/R
Material - cold-rolled steel
Color - Match for set color



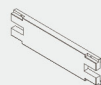
G: S12204 (*2)

Lid bracket
Material - Plastic



H: S12205

Back panel connector
Material - Plastic



I: S22204 (*2)

Positioning bracket card
Material - Iron



J: S22205 (*2)

Iron back panel
Material - SECC



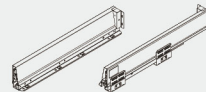
K: S22206

Bucket rack fixing components
Material - SECC



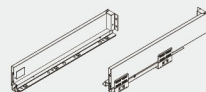
A: SB1801-A01-500

Drawer slide L/R
Material - cold-rolled steel
Loading capacity: 40kg



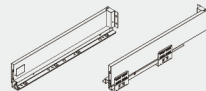
A: SB1900-A01-500

Drawer slide L/R
Material - cold-rolled steel
Loading capacity: 40kg



A: SB1900S-A01-500

Drawer slide L/R
Material - cold-rolled steel
Loading capacity: 40kg



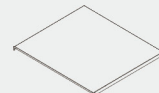
A: S12201 (*4)

16 board cabinet kit
Material - Plastic
Colors - Black



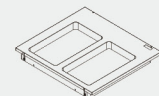
B: S22203

lid
Material - cold-rolled steel
Color - Match for set color



C: S12203

Bucket rack
Material - Plastic
Colors - Black
Size - 500*550mm



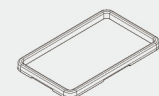
D: S12208 (*2)

Waste bin
Material - Plastic
Colors - Silver Grey
Size - 355*210*550mm



E: S12209 (*2)

Bucket clamp
Material - Plastic
Colors - Black
Size - 355*210mm



FITTINGS

SS1800 - 18

Round grid fittings



SS1800-18 - Plate holder

Material - stainless steel + plastic

Length: 260-410mm

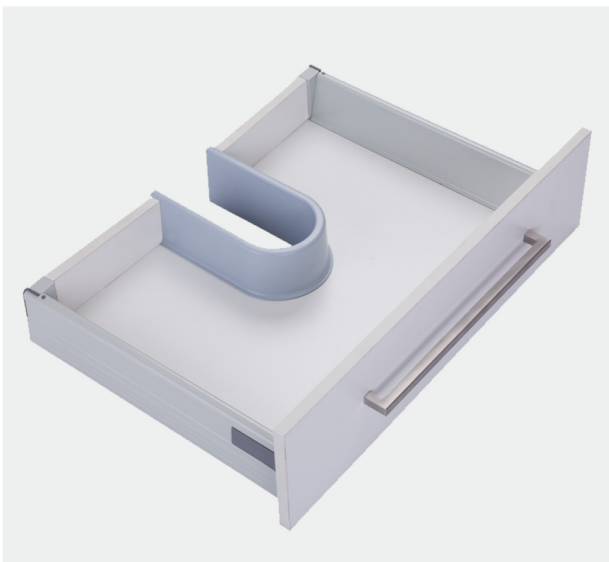
Total height: 170mm

Wide: 150mm



SS1800 - 28 / 44

U-shape sink Classical drawer system

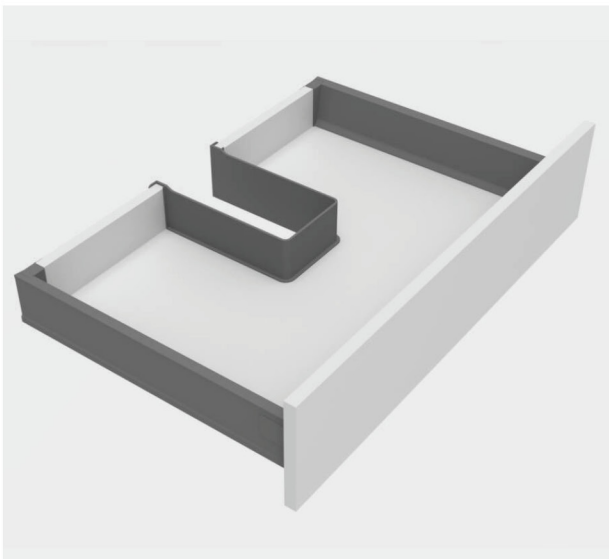
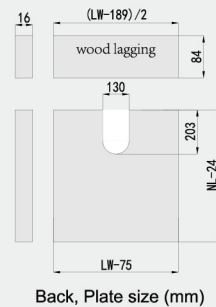
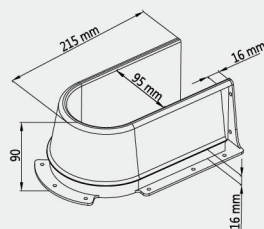


SS1800 - 28

Material - Plastic

Color - Match for set color

Height - 86mm

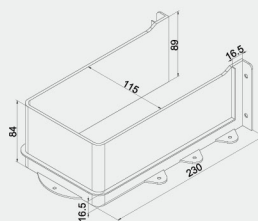


SS1800 - 44

Material - Plastic

Color - Match for set color

Height available - 86mm



FITTINGS

SS1800 - 30/ 31/ 32

Glass grid fittings

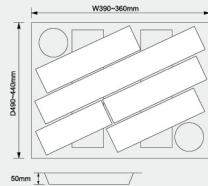
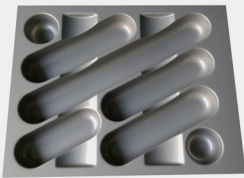


B

Fittings

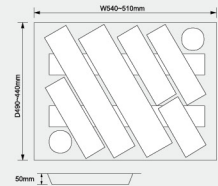
SS1800 - 30

Material - Plastic
Color - Silver grey



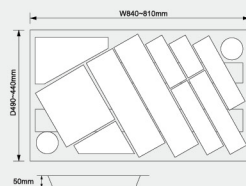
SS1800 - 31

Material - Plastic
Color - Silver grey



SS1800 - 32

Material - Plastic
Color - Silver grey



Depth	Width
490~440mm	390~360mm
	540~510mm
	840~810mm

FITTINGS

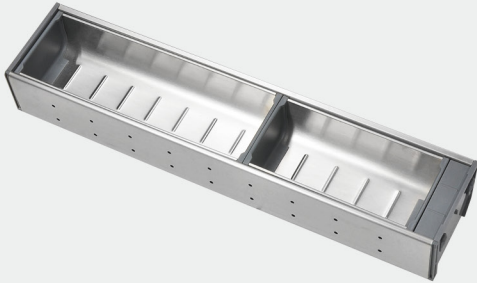
SS1620

Stainless steel 304 cutlery box

B

Fittings

SS1620 - B



Size: 450mm / 500mm

Depth	Specification
450mm	W103xD422xH64
500mm	W103xD472xH64

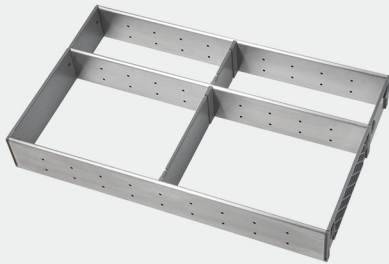
SS1620 - C



Size: 450mm / 500mm

Depth	Specification
450mm	W280xD422xH64
500mm	W280xD472xH64

SS1620 - F



Size: 450mm / 500mm

Depth	Specification
450mm	W290xD422xH64
500mm	W290xD472xH64

SS1620 - G



Depth	Specification
/	W88xD176xH60
/	W88xD264xH60
/	W88xD352xH60

SS1620 - I



Size: 450mm / 500mm

Depth	Specification
450mm	W376xD422xH64
500mm	W376xD472xH64

SS1042-A & SS1047-A & SS1542-A/B/C & SS1547-A/B/C

KITCHEN STORAGE SYSTEM

Narrow Dividing Boxes

SS1042-A/ SS1047-A

Size W*D*H: 100*420/470*55mm

Material: Aluminum Sheet+Coated Gal Steel Sheet

Wide Dividing Boxes

SS1542-A/ SS1547-A

Size W*D*H: 150*420/470*55mm

Material: Aluminum Sheet+Coated Gal Steel Sheet

Knives Holder

SS1542-B/ SS1547-B

Size W*D*H: 150*420/470*55mm

Material: Aluminum Sheet+Coated Gal Steel Sheet

Sliding Surface Box

SS1542-C/ SS1547-C

Size W*D*H: 150*420/470*55mm

Material: Aluminum Sheet+Coated Gal Steel Sheet

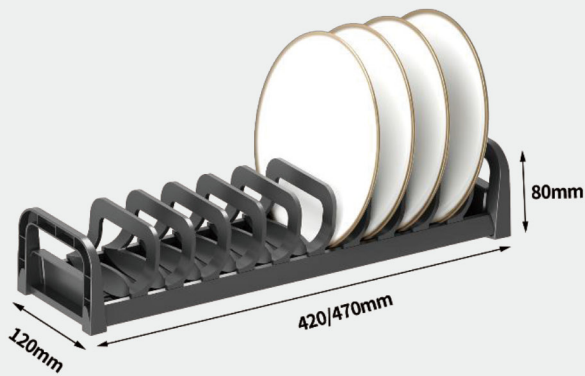
FITTINGS

SS1142-A/B/C/D & SS1147-A/B/C/D

KITCHEN STORAGE SYSTEM

B

Fittings



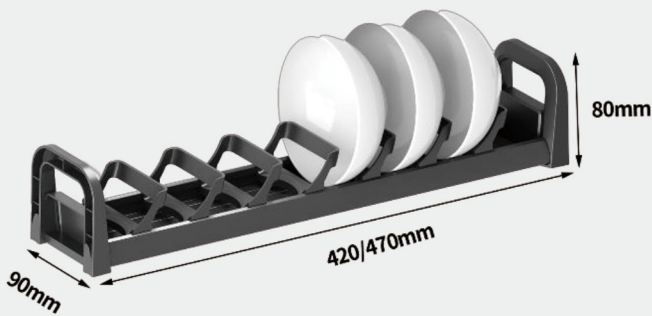
Dish Inserting Rack

SS1142-A/ SS1147-A

With 10/11 pcs posts

Size W*D*H: 120*420/470*80mm

Material: Aluminum Bottom + ABS Movable Dividers



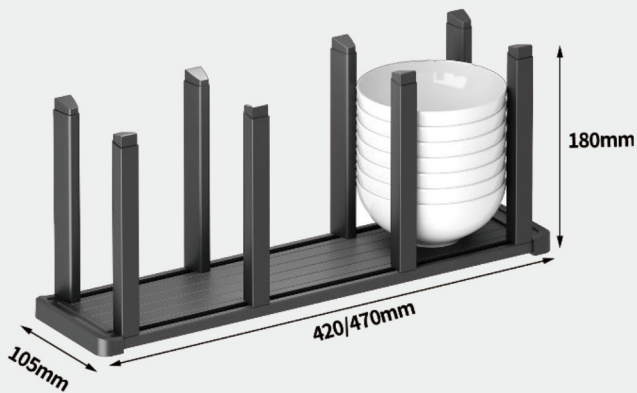
Bowls Inserting Rack

SS1142-B/ SS1147-B

With 7/8 pcs posts

Size W*D*H: 90*420/470*80mm

Material: Aluminum Bottom + ABS Movable Dividers



Bowls Stacking Rack

SS1142-C/ SS1147-C

With 8pcs posts

Size W*D*H: 105*420/470*180mm

Material: Aluminum Bottom + ABS Movable Dividers



Dish Stacking Rack

SS1142-D/ SS1147-D

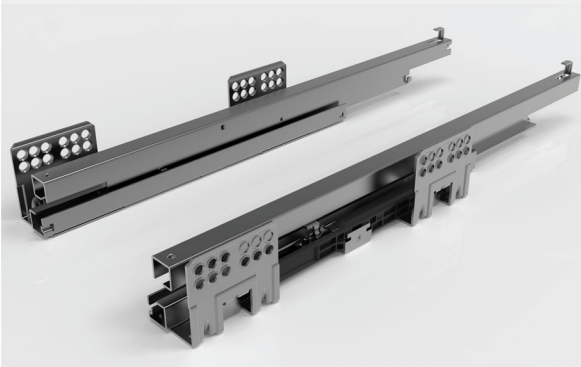
With 8pcs posts

Size W*D*H: 160*420/470*180mm

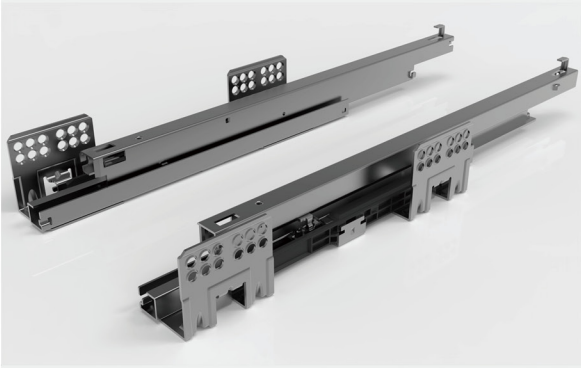
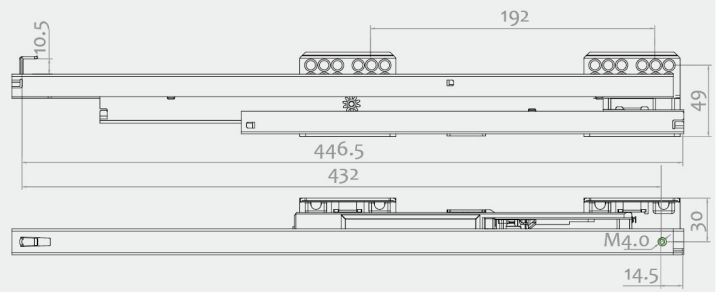
Material: Aluminum Bottom + ABS Movable Dividers

SS0101/ SS0201/ SS0301

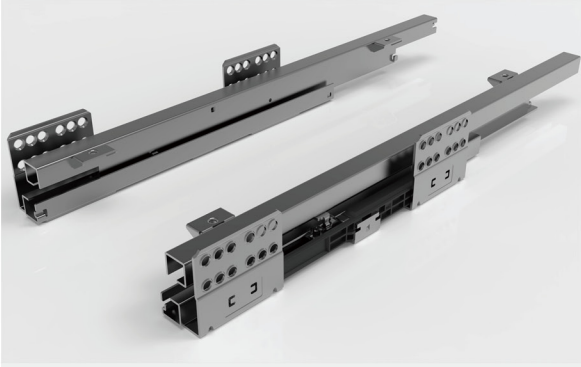
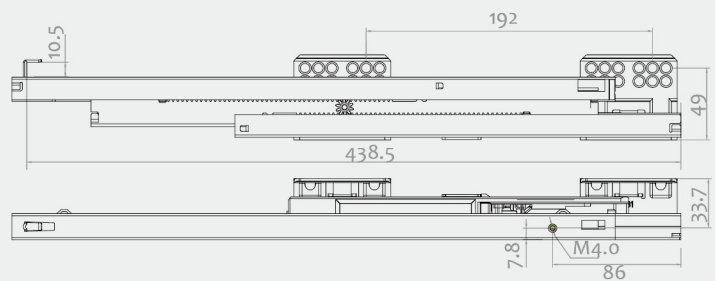
Pull-out basket slide



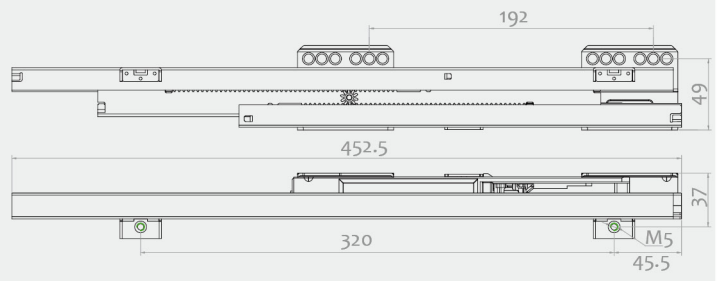
SS0101



SS0201



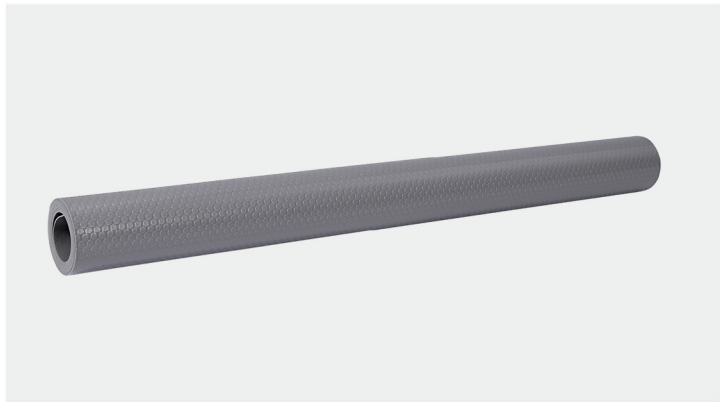
SS0301



FITTINGS

SS1622-S

Granule mats



SS1622-S

Large - granule mats

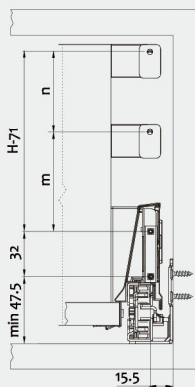
Specification: 0.48x20m
1x20m
1.2x20m

SS1801-36

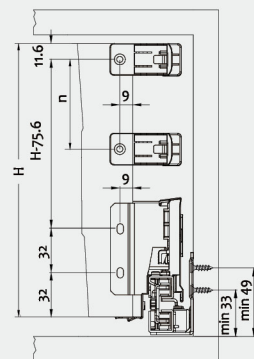
Side square railings connector



Front connector panel installation dimensions



Back panel installation dimensions



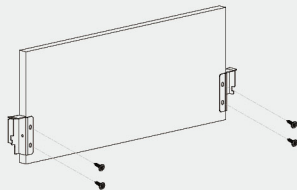
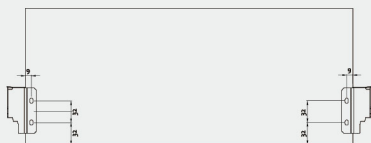
Material - POM

Side square/ round railings connector

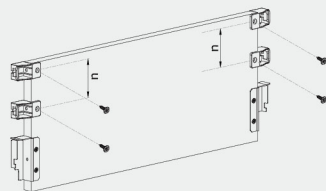
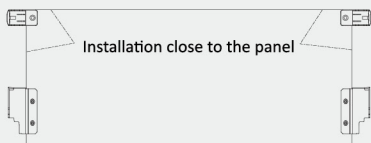
Color - Match for set color

Explanation Of Installation On Several Specific Cases

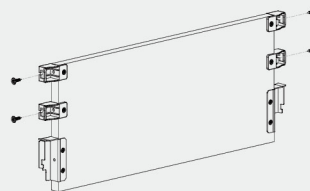
1. Installation of back brackets



2. Installation of DIY rods

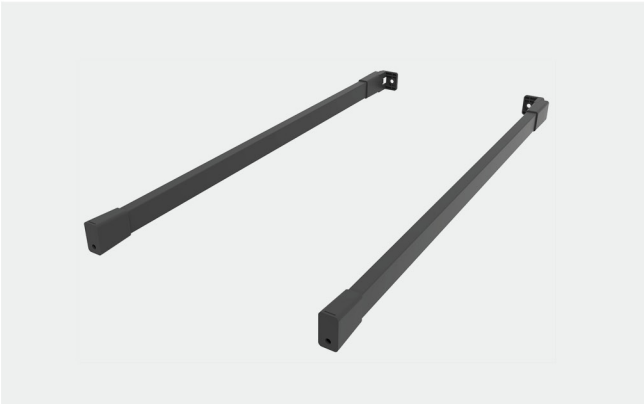


Fastening and fixation



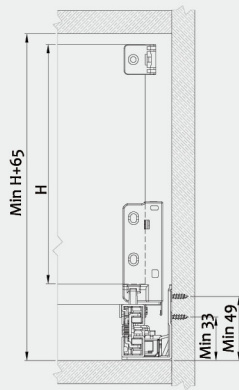
SS2900-12

Side square railings with DIY connector

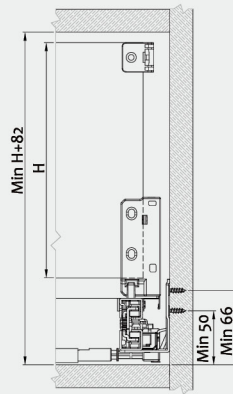


Cabinet space requirements

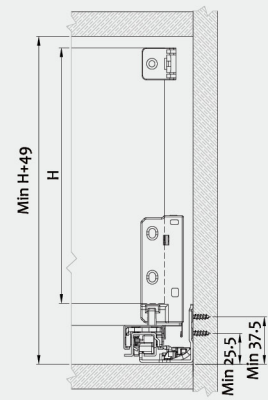
For soft-close drawer system



For push-open drawer system with balance bar

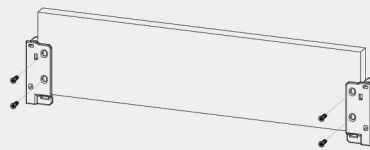
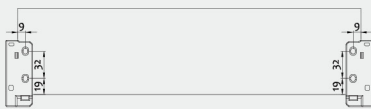


For 3-fold concealed drawer slide

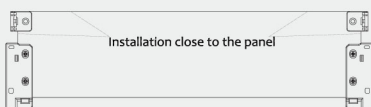


Explanation Of Installation On Several Specific Cases

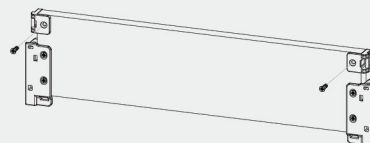
1. Installation of back brackets



2. Installation of DIY rods



Fastening and fixation



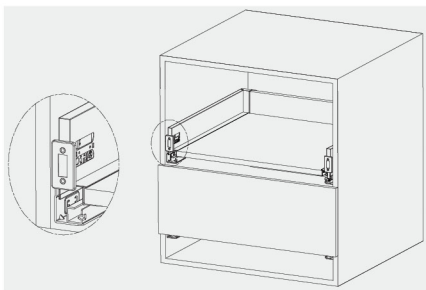
FITTINGS

SS1900-TD1

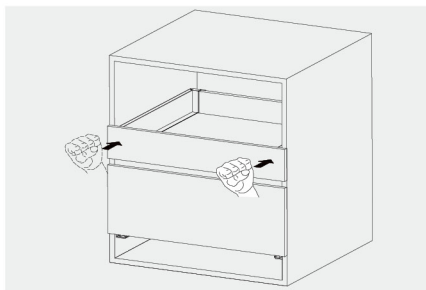
Marking Tool for front bracket fixing positions



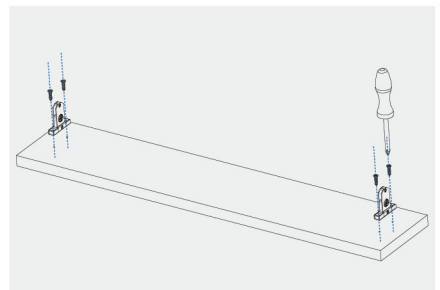
SB1801 A01/ SB1900-A01



Put the marking tool gauges into the R/L drawer sides.

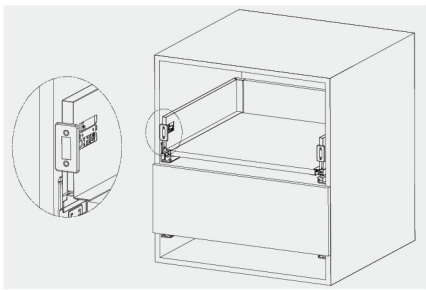


Line up the drawer front panel and mark positions to the right place with a light tap on both sides.

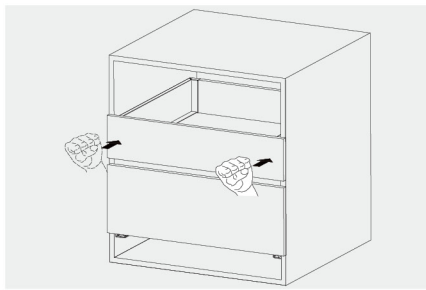


Fix front brackets with screws according to the marks.

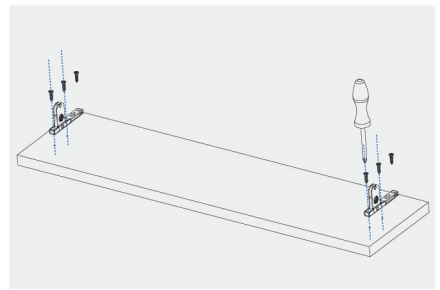
SB1900-B01



Put the marking tool gauges into the R/L drawer sides.

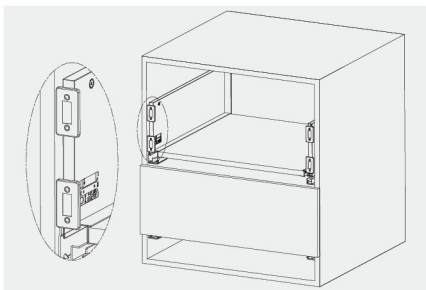


Line up the drawer front panel and mark positions to the right place with a light tap on both sides.

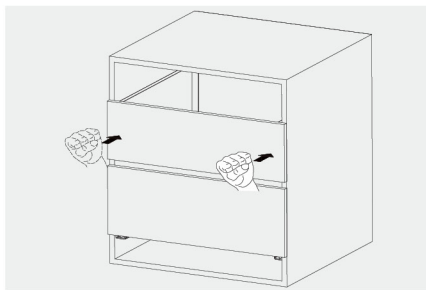


Fix front brackets with screws according to the marks.

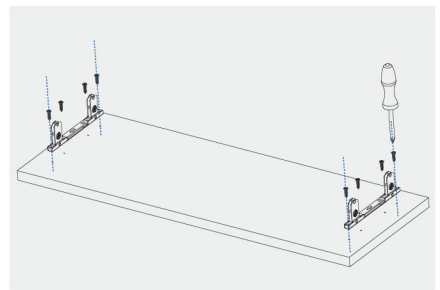
SB1900-C01/ SB1900-D01



Put the marking tool gauges into the R/L drawer sides.



Line up the drawer front panel and mark positions to the right place with a light tap on both sides.



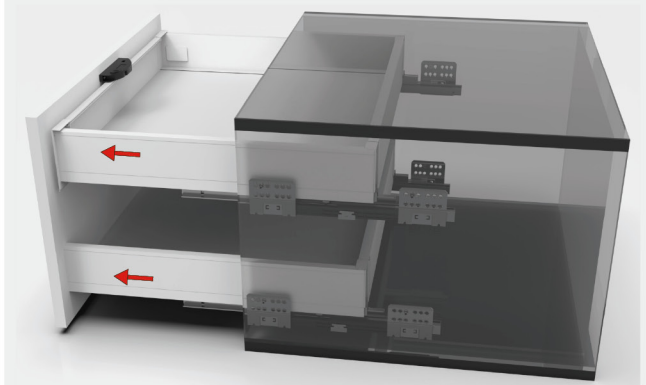
Fix front brackets with screws according to the marks.

SS1900-TE1

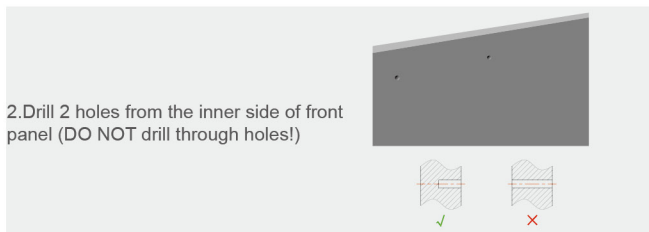
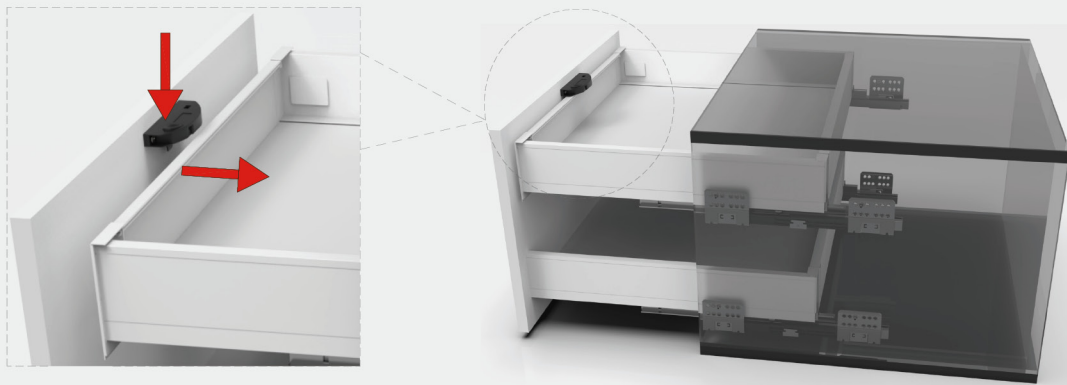
Inner drawer auxiliary fitting



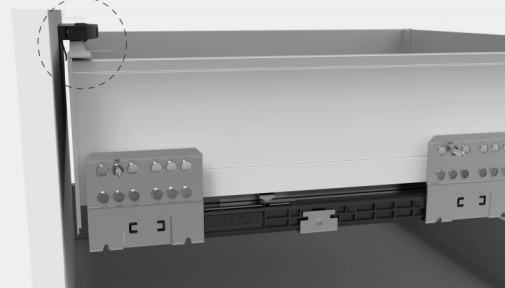
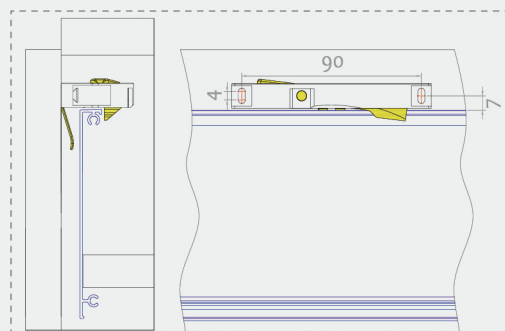
The outer drawer and inner can be simultaneously opened or closed



Press down the button so that the inner drawer can be released and moved independently



Installation dimensions of the auxiliary fitting

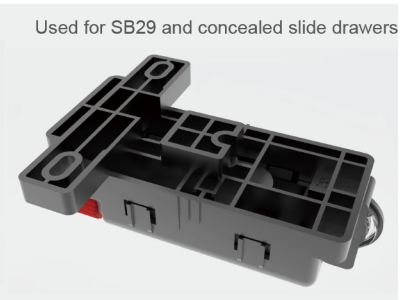
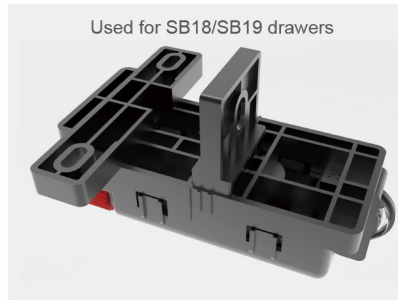
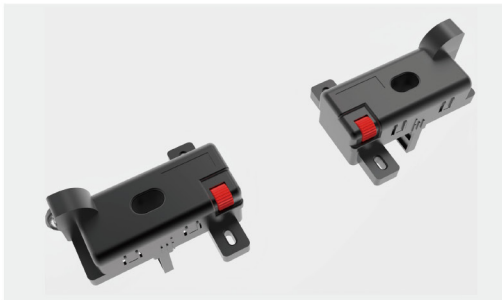


FITTINGS

SS1900-TP1

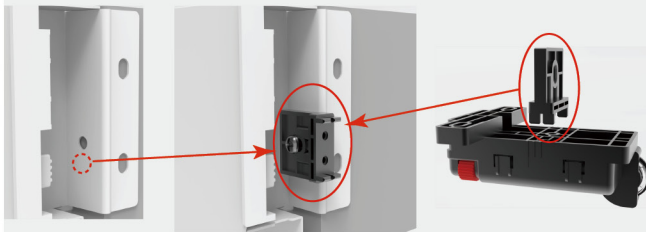
Drawer system stabilizer

B
Fittings

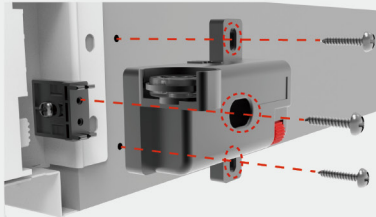


Installation on SB18/SB19 drawers

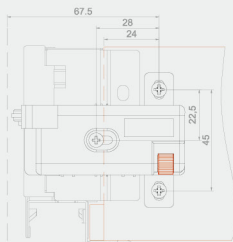
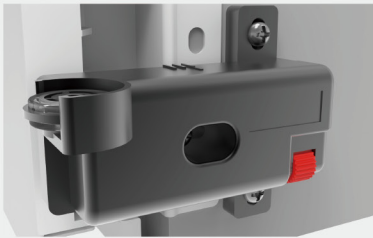
1. Remove the independent fitting from the back of stabilizer and fix it onto the drawer's back panel connector.



2. Fix the main body of the stabilizer onto the drawer's back panel using 3 screws (M3×20).



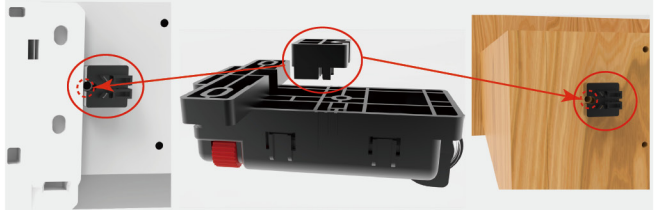
3. Installation position and back panel drilling dimensions are shown as follows.



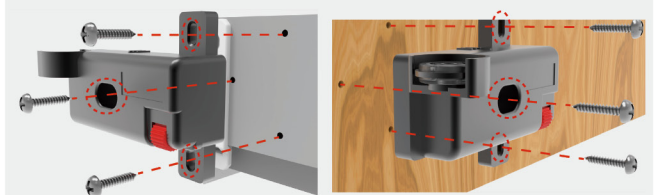
Cabinet inner boundary

Installation on SB29 drawers and concealed slide drawers

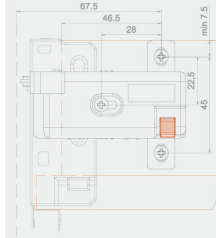
1. The fitting from the back of stabilizer (different from SB18/19) should align with the corresponding hole (marked in the image below) drilled on the back panel.



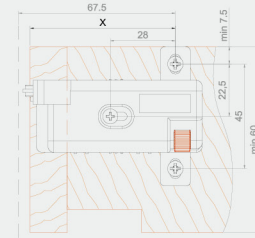
2. Fix the stabilizer onto the drawer's back panel using 3 screws (M3×20).



3. Installation position and back panel drilling dimensions are shown as follows.



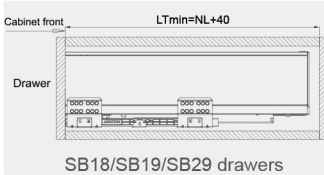
Cabinet inner boundary



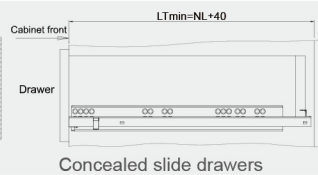
Cabinet inner boundary

	X
(16mm drawer side thickness)	62.5
(18mm drawer side thickness)	60.5

Cabinet depth requirements

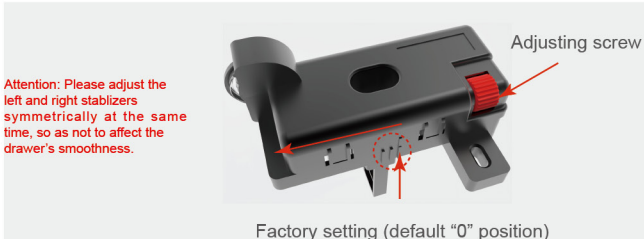


SB18/SB19/SB29 drawers

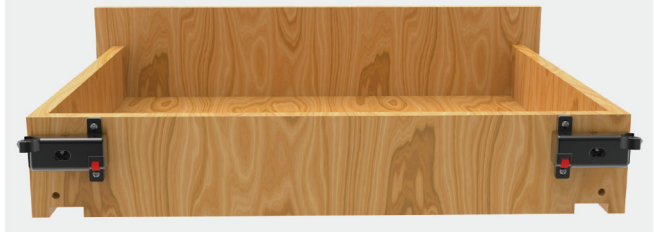
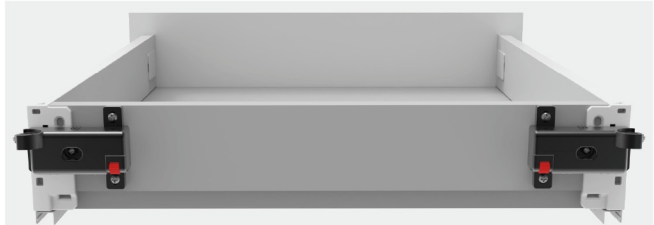


Concealed slide drawers

Adjusting method (Adjustment range: max 5mm)

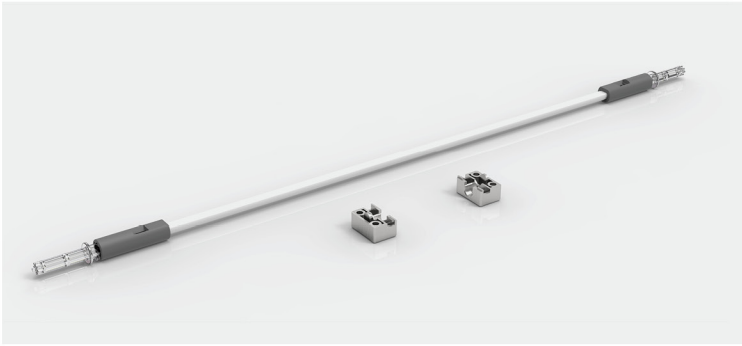


Factory setting (default "0" position)



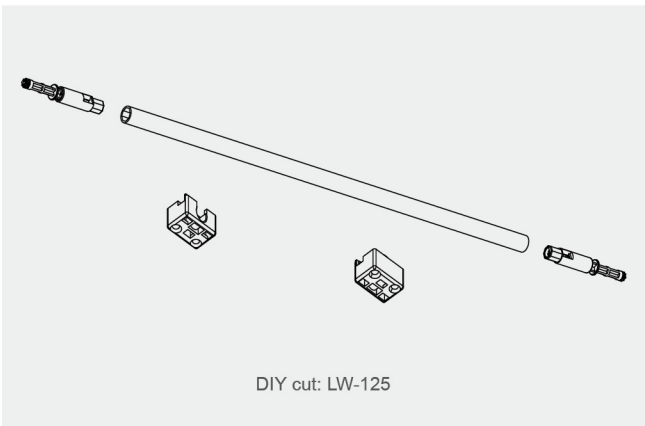
SS1800-P21

Synchronized linkage

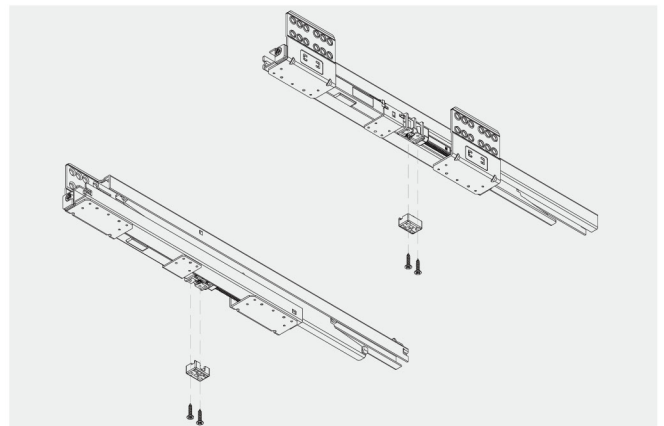


Material - aluminium + plastic
 Color - White, Silver grey
 Length - 120mm

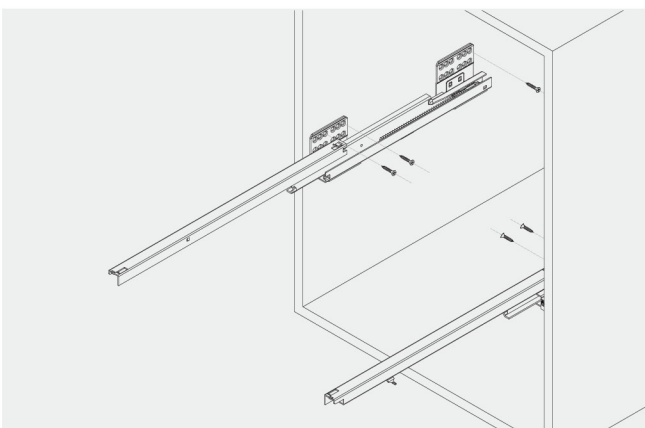
Drawer slides balance bar DIY cut



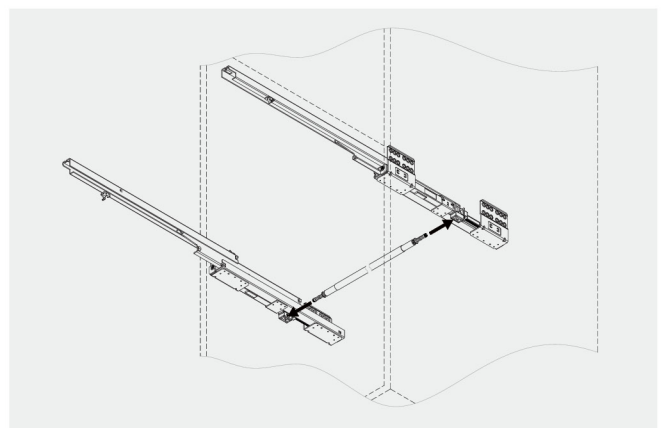
Slides installation



Slides installation

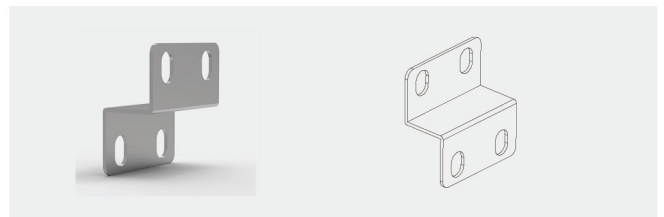


Balance bar installation



S22974

Reinforcement angle codes for the back and bottom plates



Can be used for SB29, SB39, and SB59 series horse riding drawbars for internal and external drawbars